

Motor Purge & Pressurization System D826

Purge flow rates up to 6,000 NI/min (212 SCFM)



Features

- **Approvals** – US/Canada: Class I Div 1 or Class I Zone 1.
- **Ambient temperature range:** Certified for use from -20°C to +55°C (-4°F to +131°F)
- **User Selectable Settings :**
 - 5 pre-set selectable purge flow rates (2,000/3,000/4,000/5,000/6,000 NI/min) (71/106/141/177/212 SCFM)
 - 1-99 minute purge time (-0/+3 seconds tolerance). Suits a wide variety of machine frames sizes
- **Clear Visual Status Indication :** Local indicators for “Alarm/Pressurized” and “Purging”.
- **Continuous Operation through Closed Loop Automatic Pressurization System (CLAPS) :** Eliminates spurious trips on start-up or load change.
- **316L Stainless Steel enclosure & fittings :** Excellent resistance to corrosion for harsh environments.
- **Full Compliance with Standards** - Direct purge flow measurement at Relief Valve exhaust orifice.
- **Signal outputs:** Volt-free contact closures terminated inside a stainless steel explosion-proof junction box.
- **No external power required:** Purge timer is either battery-powered (field-replaceable) or driven by an electro-pneumatic power supply (EPPS).

Operation

The Motor Purging and Pressurization control system has been designed for use on large electrical machines located in a hazardous location.

The system delivers a high purge rate for a given duration (as defined by machine designer and Notified Body) prior to start-up, to purge any potentially explosive gases from the machine. After purge, the system automatically switches to leakage compensation mode for normal operation. Expo’s Closed Loop Automatic Pressurization System (CLAPS) automatically compensate for pressure variations in the machine during start-up or through temperature variations during operation. The system enables the machine to continuously operate at a set over -pressure, saving considerable time during test and commissioning, simplifying normal operations.

System Components

The system comprises the Control Unit (CU) and the Relief Valve (RLV). The Control Unit contains the pneumatic logic to monitor and control air flow, pressure and purge timing, and provides the system outputs via a stainless steel explosion-proof junction box.

The RLV measures purge flow at the outlet and provides over-pressure protection for the machine through a patented magnetically - set exhaust valve with integrated spark arrestor.

Explosion Protection

Hazardous Area classification:

US/CAN

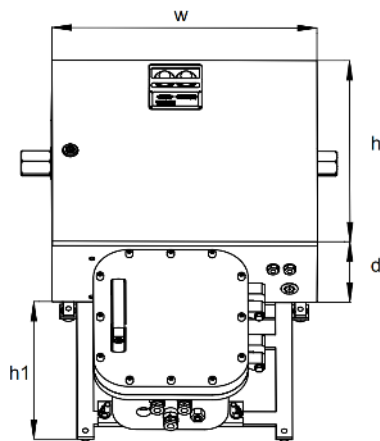
Class I Div 1 Groups B, C & D

Class I Zone 1 AEx db [ia Ga] IIB + H2

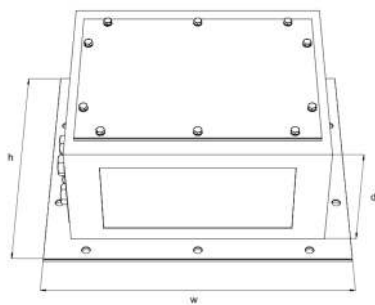
Tamb -20 to + 55°C

System Data D826

Control Unit



Relief Valve



Dimensions	CU	RLV
Width w	480mm (18.9")	330mm (13")
Height h	425mm (16.7")	280mm (11")
Height h1	315mm (12.4")	N/A
Depth d	177mm (7")	136mm (5.4")
Weight	58kg (128lbs)	7kg (15.4lbs)

Enclosure & Mounting:

Housing & external process connections 316L stainless steel. Wall mounting lugs provided for fitting to machine.

Junction box:

316L stainless steel, Explosionproof Class I and Class II, Division I group B, C, D, E, F, and G. Flameproof Ex d Zone 1 Gas Group IIB + H₂.

Process Connections:

Purge inlet: 1" NPT (F), recommended supply pipe: 1" I.D. min. Purge outlet to machine: 1" NPT (F).

Reference point & signals: 1/8" NPT (F).

Purge gas: Clean Dry Air or Inert Gas.

Supply pressure 5-16 barg (73-232psi)

Technical Specifications D826

Order code: D826MOTORSYS-E (Battery powered timer)
Description: 5XLC/ss/ET/OV/PC/PO/D826

Order code: D826MOTORSYS-S (EPPS powered timer)
Description: 5XLC/ss/ES/OV/PC/PO/D826

Purge flow rate: 2,000-6,000 NI/min (71-212 SCFM)
Leakage compensation: Up to 1,500 NI/min (53 SCFM)

Data

Intrinsically safe Electronic Timer, range 1-99 mins. battery powered. Option to use Electro Pneumatic Power Supply (EPPS).

System outputs are volt-free contact closures terminated in an explosion-proof junction box, with:

Power= DPNO 120 Vac 1 A

Alarm = SPNO 120 Vac 6 A / 250 Vac 3A

Intermediate Pressure/Pre-alarm = SPNO 120 Vac 6 A / 250 Vac 3A

Minimum pressure sensor default 1.5 mbarg (0.6"wc)

Range: 0.5 to 5 mbarg (0.2 to 2"wc)

Intermediate sensor/pre-alarm default 5 mbarg (2"wc)

Range: 2 to 10 mbarg (0.8 to 4"wc)

CLAPS sensor default 10 mbarg (4"wc). Range: 5.0 mbarg to 15 mbarg (2"wc to 6"wc)

Relief Valve Lift-Off pressure: default 30mbarg (12"wc)

Minimum: 20mbarg (8"wc), Maximum: 50mbarg (20"wc)

Certification/Approvals:

US/CAN

Class I Div 1 Groups B, C & D

Class I Zone 1 AEx db [ja Ga] IIB + H₂

Tamb -20 to + 55°C

01/2021